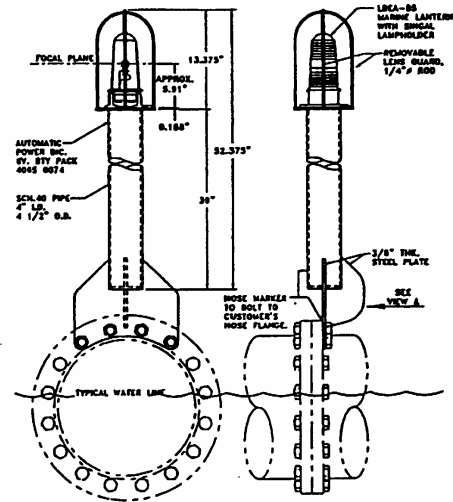


LBEA-85 DREDGE PIPELINE & OFFSHORE HOSE MARKER LIGHT

Pharos Marine/Automatic Power offers a heavy-duty, premium quality hose marker light (LBEA-85) for offshore and open ocean applications on FPSOs, CALMs, dredging etc. The unit features a precision fresnel 85mm polycarbonate buoy lens giving exceptional long range signalling capability. The 85mm lens is mounted on a high strength Lexan base. The lantern is double gasketed to keep water out. The flasher control electronics is mounted in the base of the lantern. It is delivered with photocell installed and a pre-set FL1 rhythm which can be field adjusted via a hex switch to provide 15 additional flash rhythms.

The battery compartment is 100mm-diameter cylinder of mild steel, which is painted with a zinc rich primer, and two coats of high build white epoxy paint. Two each 6-volt 40-ampere hour battery packs are housed in the battery compartment. Two bands of yellow retroreflective film mark the body of the light.



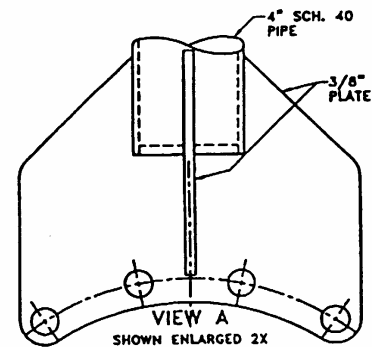
LBEA-85 MARKER LIGHT

LANTERN	LBEA-85
6-VOLT LAMP	0.25AMP
FIXED RED RANGE (T=0.80)	2.0NM
FL1(0.1+0.9) YELLOW	2.1NM
BATTERY SERVICE PERIOD FIXED RED LIGHT	30 DAYS
BATTERY SERVICE PERIOD FLASHING YELLOW LIGHT	180 DAYS

Dimensions (approx.)

Focal Plane Height: 1 metre
 Body Diameter: 100mm (4.0 inches)
 Weight: 35kg (77lbs)

**CONFORMS TO 33 CFR 88-PILOT
RULES ANNEX V Paragraph 88.15 Lights
on Dredge Pipeline**



CUSTOMER TO SPECIFY:

— inch diameter
 hose with a
 — pound rated
 flange.

EXAMPLE:

20 inch diameter
 hose with a
 150 pound rated
 flange.

FLANGE MATING DETAILS

Pharos Marine **Automatic Power**

AB Pharos Marine Ltd, Steyning Way, Hounslow, Middlesex, TW4 6DL, England Tel: 44-20-8538 1100, Telefax: 44-20-8577 4170

Website: www.pharosmarine.com Email: sales@pharosmarine.com

Automatic Power Inc., P.O Box 23078, Houston, Texas 77223-0738, U.S.A Tel: 1 (713) 228-5208, Telefax: 1 (713) 228-3717

AB Pharos Marine Pte Ltd., 35 Tannery Road, #05-05, Tannery Block, Ruby Industrial Complex, Singapore 347740 Tel: (65) 6747-9325, Telex: RS 33272 PHAROS, Telefax: (65) 6746-0478