

## Plug Your Platform into the Automatic Ship Identification System (AIS)

All SOLAS class vessels of 300 gross tons, or greater, on international voyages are required to carry AIS transponders and displays (SOLAS Ch V, Reg 19). Additionally, the U.S. Coast Guard requires all commercial vessels over 65 feet in length and towing vessels over 26 feet in length and 600 horsepower on international voyages, or operating in U.S. navigable waters, to carry and operate AIS transponders (33CFR164.46)

IALA Recommendation A-126 (*The Use of AIS in Marine Aids to Navigation*) recommends the use of AIS transponders on offshore platforms to indicate the platform's position and broadcast appropriate safety messages, such as an area to be avoided.

Automatic Power's ATONIS transponder uses the AIS system to autonomously send data identifying your platform by name and position when your crew boat is within VHF-FM radio range of your platform. This information is automatically displayed on the crew boat's AIS monitor located in the wheelhouse.

With an Automatic Power ATONIS AIS transponder installed on your platform, you can easily warn other AIS equipped vessels of:

- The identity of your platform by name and location
- The existence of any alarm condition on the platform by a safety broadcast text message (gas leak, intruder alert, etc.)
- Entry into an exclusion area surrounding your platform

When integrated with our ATONIS AtoN Monitoring system, service crews can easily obtain a detailed status of individual lights, foghorns and power system from a remote location, as well as an alert when an AIS equipped vessel approaches too close to the platform.

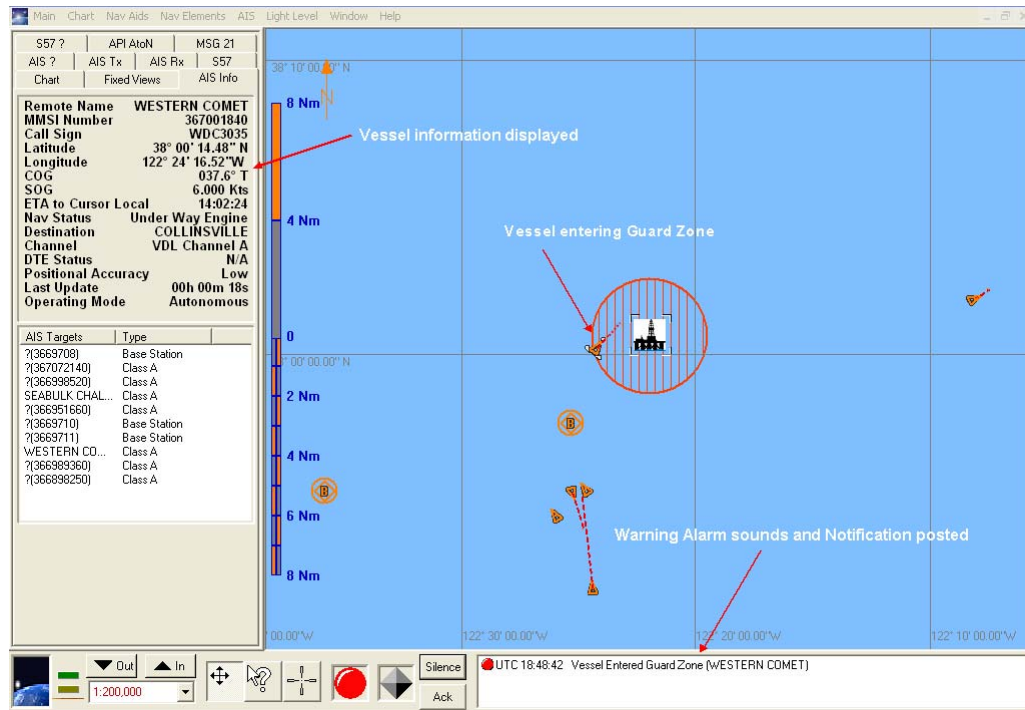
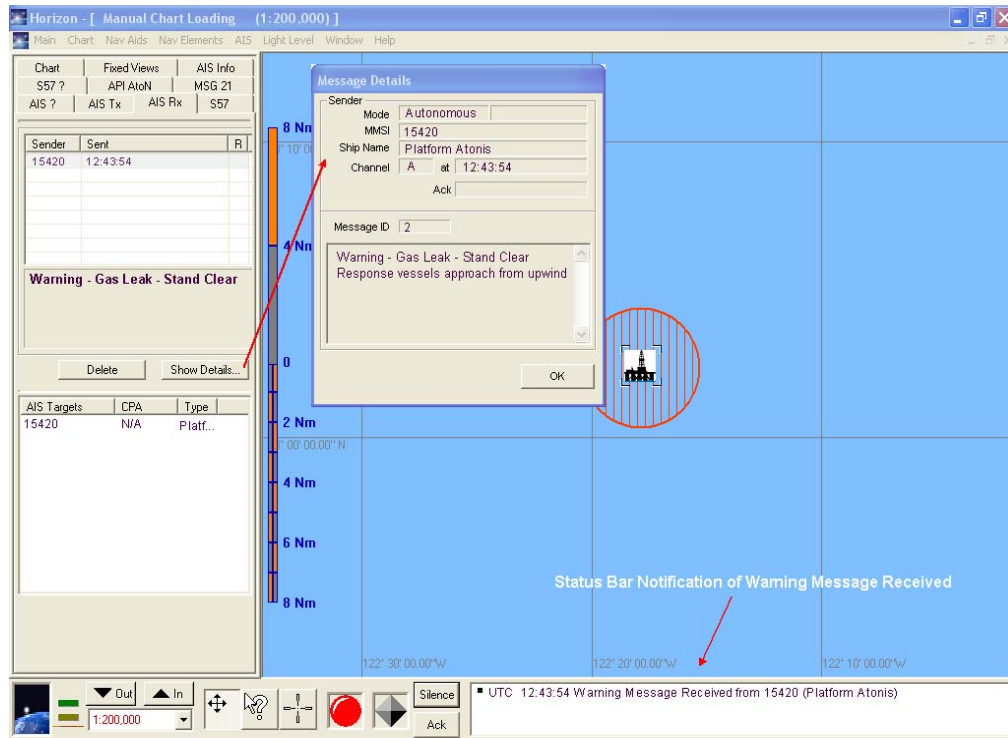
Our ATONIS AIS transponder is specifically designed for the platform application. It operates off 12 or 24 VDC and consumes less than 1 amp-hour per day making emergency battery back-up and solar powering the preferred configuration. It can be packaged for NEC Class 1 Division 2 Hazardous Areas or IEC Zone 1 areas

*Are you taking  
advantage of the  
new international  
AIS system to  
enhance the safety  
of your platform?*



**ATONIS AIS Transponder**

Contact Automatic Power for details on this new addition to platform safety systems.



Typical AIS Electronic Chart Displays for Warning Notifications