

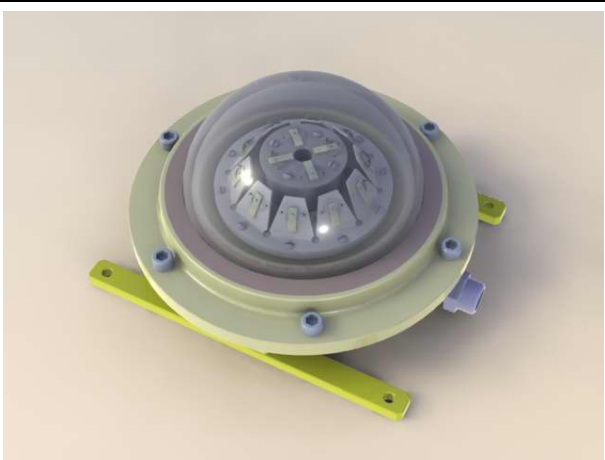
FA-165EX MULTIPURPOSE LED LIGHTING FIXTURE

The FA-165EX Flameproof, Zone 1 Fixture, certified under Certificate No. DEMKO 02 ATEX 131875, is designed to perform multiple lighting functions on offshore production platforms and drilling rigs. The fixture enclosure is comprised of cast LM-6 marine grade aluminum, an upper section of a tempered, toughened glass globe cemented into a support ring that is machined to form a flame path. With a flameproof, IP-66 enclosure approval, a variety of non-hazardous certified internals can be used. M20 or M25 cable entries remove the need for additional junction boxes.

The FA-165EX962 is designed to house state of the art high flux LEDs. For the perimeter, obstruction, and repeater applications, the LEDs are coupled to high efficiency optics to meet the CAP 437 and ICAO signaling requirements.

For the Spotlight applications, the LED arrays mounted on a stainless steel, parabolic reflector. The highly efficient reflector uses a state of the art dichroic hybrid spectral metal coating. The LEDs are mounted on metal core PCBs with patented integrated heat pipes to cool the LED arrays **without a cooling fan**. This highly efficient, passive, cooling system gives the LED array the highest design life in the marketplace (greater than 50,000 hours).

The LED electronic controller, housed in the EEX 'd' lantern enclosure, provides current limiting to the LED array. Nominal controller input is 24 volts to accommodate standby batteries. Input voltages including 24 VDC or 110V/220V 50-60HZ are also available. As an option, the LED controller may also be located as much as 500 meters away from the light.



MODEL FA-165EX962 PL/OL

APPROVED VARIATIONS OF LANTERN.

FA-165EX962-PL: 5 Watt Green LED Array helideck perimeter light conforming to CAP-437. Yellow and Blue colors are also available.

FA-165EX962-OL: 3 Watt Red LED Array aviation obstruction light conforming to 10 candela ICAO standard. 50 to 200 candela output is available.

FA-165EX962-SL: 250mm high, mounted on side Floodlight/Spotlight, 20 Watt White LED Array providing a low dazzle 4 degree vertical by 90 degree horizontal illumination for helideck pads, illuminated windsocks and other area illumination requirements.

FA-165EX962-REP: 10 Watt Red LED array providing the required candela for repeaters for helideck status lights conforming to CAP 437.

EC-TYPE EXAMINATION CERTIFICATE – PENDING-

Patent No.: US 7,461,952

FORM N° 061510F