

FA-249 MARINE LANTERN

Featuring a highly efficient Fresnel-type acrylic drum lens system, the FA-249 signal lantern is a rugged, compact, and lightweight. It is particularly suited for buoys, fixed platforms, barges, and aviation obstruction lights.

Designed to withstand the mechanical stresses of service on buoys, the FA-249 Lantern features a three-piece lens mounting system. This system was designed to eliminate lantern failures from cracked or broken components at the lantern hinge point. It utilizes molded Lexan® for the lens ring and base where mechanical strength is at a premium.

The Lexan® base houses the flasher and/or other mechanisms. Stainless steel thumb screws or, optionally, quick opening stainless steel latches are two options for a tool less entry system that fully compresses the lens gasket and provides strong positive closure of the lantern. The stainless steel latch can be secured with a padlock to deter vandals. A bracket on which the flasher/lampchanger is mounted is secured to the inside of the base section. Fittings in the base provide outlets for electrical connection. The lamp projects into the upper section which supports the 360° acrylic lens.

The 155mm lens is acrylic from an extreme accurate mold. Years of exposure have proven acrylic to be a stable lens material. The candlepower output of the lens exceeds that of larger conventional pressed glass lenses because acrylic has a higher color transmission factor and better optical characteristics. Lenses are available in clear, red, green or yellow. A bird spike is part of the molded lens.

Candelabra, prefocused, marine signal lamps are mounted on a rotating mechanism that automatically brings the next lamp into precise focal position when the operating lamp fails. Six-place units are able to rotate S-8 envelope lamps inside the 155 mm lens. Four-place units are able to rotate both the S-8 envelope and the larger S-II envelope lamps in the 155 mm lens.

A unique catoptic insert is available for the FA-249 Lantern to capture the light lost out the top of the lens and redirect it to the horizontal plane. This insert increases the horizontal candlepower by 5%, giving the FA-249 the highest candlepower output available from a 155 mm lantern.

Lanterns are fitted with a sunswitch, which limits lantern operation to hours of darkness only.

Available with Factory Mutual approval for Class 1, Division 2, as well as Zone 2. Ingress IP 56.

ATEX CONFORMITY CERTIFICATE (ZONE 2)

Certificate Number: Epsilon 05ATEX1407
Directive: ATEX Directive, 94/9/EC
Coding: II 3 G EEx nL IIB T3

Form No.: 041911A



Photometric Data (candela)

Lamp C-8 Filament	FA-249	FA-249 with catoptic insert
6V, 0.25 A	30	31.5
6V, 0.46 A	85	89
6V, 0.70 A	110	115
6V, 0.90 A	125	131
12V, 0.25A	64	67
12V, 0.55A	120	126
12V, 0.77A	180	189
12V, 1.15A	260	273
12V, 2.03A	402	422
12V, 3.05A	823	864
12V, 9.0A**	3770	3958
CC-8 Filament		
12V, 0.5A	192	201
12V, 1.0A	512	537
12V, 2.0A	1050	1102
12V, 3.0A	1380	1450

Halogen Lamps

12V, 20W	939	990
12V, 35W	1410	1475
12V, 50W	1470	1540
12V, 75W	1890	1980

Note: For red lens multiply above by 0.30. For green lens multiply above by 0.32. For amber lens multiply above by 0.68. Maximum power dissipation of lantern is 55 watts. Vertical Divergence 4.0°-4.5° to 50%.

TECHNICAL DATA

LENS:

155 mm 360° visibility acrylic Fresnel lens in clear, red, green, and amber. Sectorized and internally shielded lenses are available.

CATOPTIC INSERT:

Optional. Increases candlepower by 5%.

FLASHCHANGER®:

Four- or Six-place motor driven, APCL-5/APCL-10 with selectable flash rhythms, pulse width modulation regulation, solar charge regulator, monitoring, synchronization, self-test function, communications port, lamp out control terminal, photocell, and enhanced environmental protection.

BASE MOUNTED ACCESSORIES:

The compact size of the APCL-5 FLASHCHANGER opens up significant space in the base of the FA-249 Lantern. Automatic Power has a variety of products that takes advantage of this free space to enhance the capabilities of the FA-249 Lantern:

- TR-3 Power Supply with 120/240 VAC Input and 3 amp 12 Volt flashed output.
- Uniflash®-series wireless synchronization system.
- UHF/VHF radio for monitoring status of buoy lighting system or radio receiver for self test actuation.
- Battery Charger and Small standby battery.
- Step-down transformer for AC/DC Lampchanger in fixed burning applications.

LAMPS:

Prefocused T3.5, S-8, or S-11 envelope and C-8 or CC-8 filament, incandescent or tungsten halogen lamps to 110 watts. S-11 may only be used with a four-place lampchanger.

MATERIALS:

Acrylic lens. Lexan® base, stainless steel fittings, silicone-rubber lens gasket. ©Registered trademark.

FINISH:

White or gray color impregnated Lexan.

ACCESSORIES:

Spirit Level, Focusing Marks.

MOUNTING:

Four each 5/8 inch holes on a 7 7/8 inch bolt circle, 90° apart. Three-hole base pattern is also available.

INGRESS RATING: IP 56

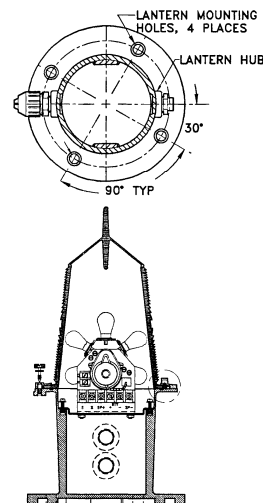
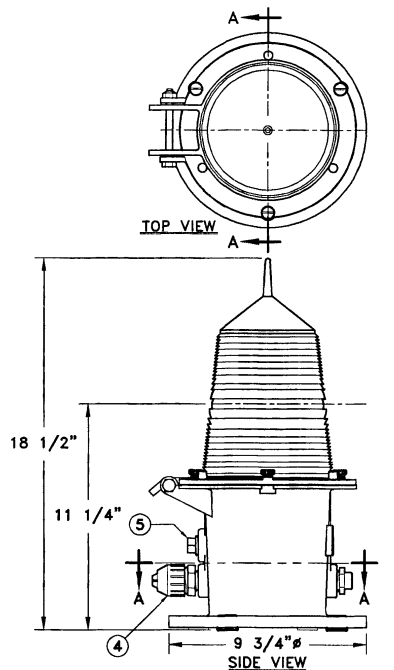
DIMENSIONS:

6.5 pounds
10in. X 10in. X 18in.

SHIPPING DATA:

10 pounds
13in X 13in X 21in.

Specifications subject to change without notice



Pharos Marine – England
Steyning Way, Hounslow
Middlesex, England TW4 6DL
Phone: 44-20-8538-1100
Fax: 44-20-8577-4170
sales@pharosmarine.com

**AUTOMATIC POWER – HOUSTON
MAIN OFFICE & FACTORY**
213 Hutcheson St.
Houston, TX USA 77003
P.O Box 230738
Phone: 713-228-5208
Fax: 713-228-3717
sales@automaticpower.com

Pharos Marine – Singapore
35 Tannery Road
05-05 Tannery Block, Singapore
347740
Phone: 65-6-747-9325
Fax: 65-6-746-0478
abpharos@singnet.com.sg

Automatic Power – West Coast USA
26 Pizarro Avenue
Novato, CA USA 94949
Phone: 415-382-6296
Fax: 415-382-6299
dolantp@aol.com

Automatic Power – Gulf Coast USA
198 Technology Lane
Gray, LA 70359
Phone: (985) 223-8700
Fax: (985) 223-8710
dcummiskey@automaticpower.com
rleblanc@automaticpower.com

Automatic Power – East Coast USA
204 Parkway Drive
Williamsburg, VA USA 23183
Phone: 757-253-2817
Fax: 757-220-8166
APlatlantic@aol.com