

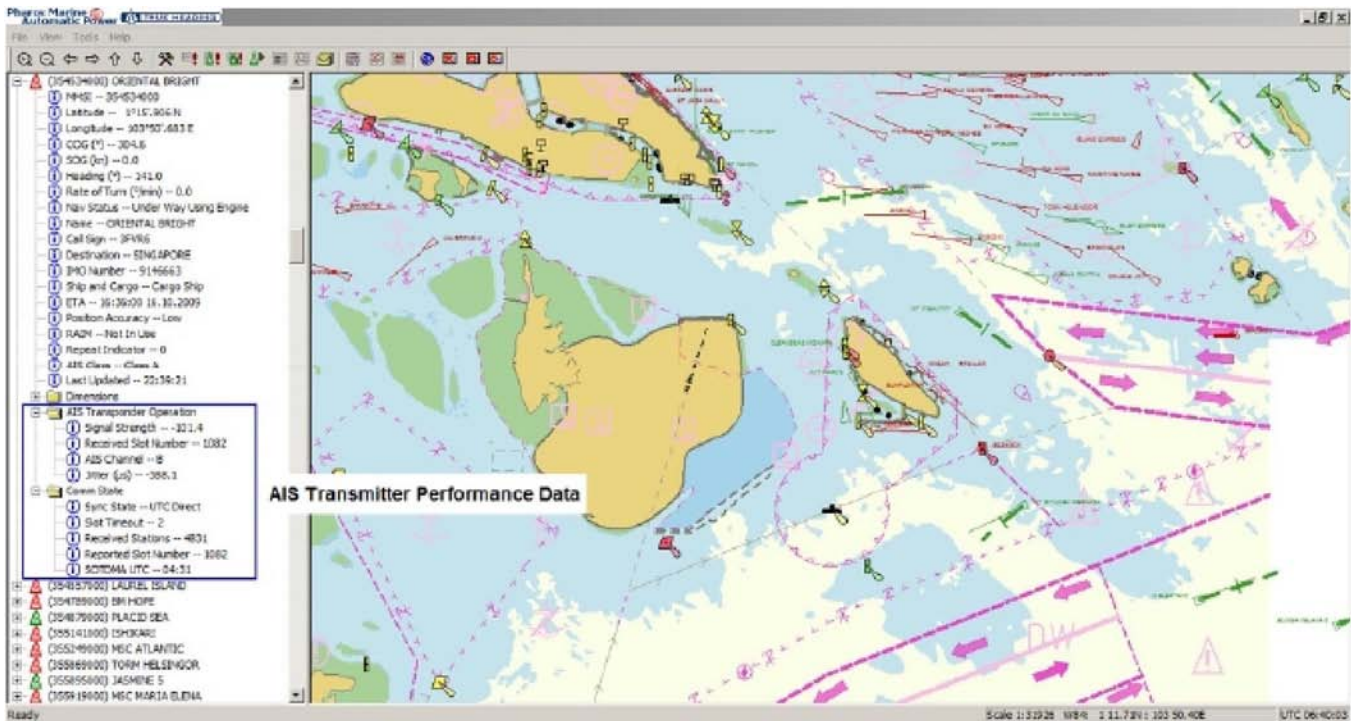
iNAV ST

El primer programa de software de AIS que dará a la Autoridad Marítima una herramienta de monitoreo invaluable para el seguimiento de datos de transpondedores clase A, clase B, Estaciones Bases y AIS de Ayudas a la Navegación dentro de la Red AIS VDL (VHF Data Link).

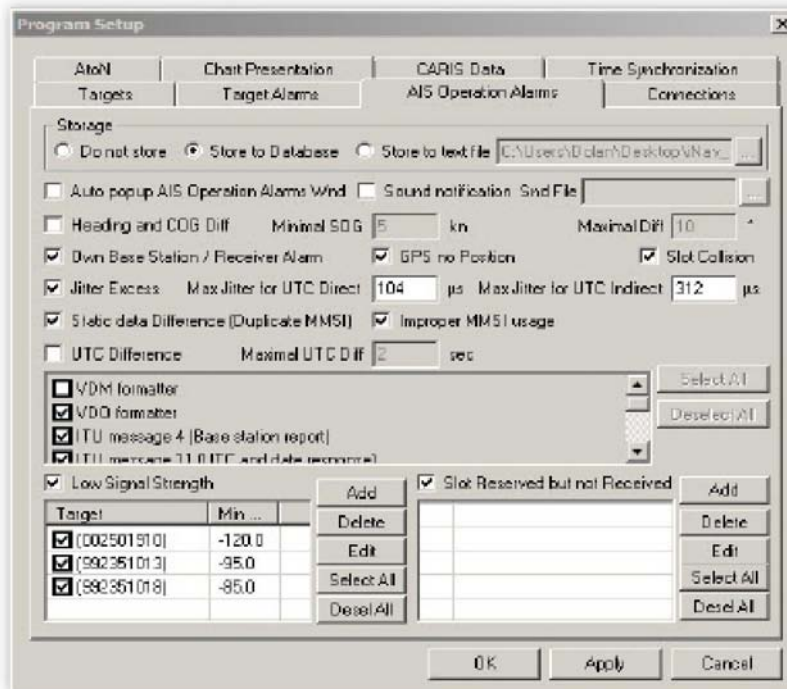
CARACTERISITCAS

- Recibe transmisiones ITU-R M.1371-3
- Recibe información de los contactos AIS en el área, acorde a normativas IMO e IALA
- Soporta operación con Bases de Datos
- Soporte Grafico para Cartografía Electrónica
- Establece condiciones de Alarma para contactos AIS
- Muestra vectores de rumbo y velocidad proporcional
- Permite filtrado de información en base a tipo o MMSI
- Actualizable a versiones avanzadas como iNav PRO
- Y mucho mas...

iNav St



Pantalla de datos generales incluyendo árbol de datos e información cartográfica



Ventana de Configuración de Alarmas y modo de Operación

The 'AIS Operation Alarms' window displays a list of alarms for all targets. The table below shows the data from the screenshot.

Time	Target	Type	Description
04.02.2010 21:26:04	(572292000) KRYSPEER SINGA	Jitter Excess	Jitter excess for "(572292000) KRYSPEER SINGA", value is -6996.7, limit is 104, Sync State - UTC Direct
04.02.2010 21:26:04	(572146000) GLENN HONGKONG	Jitter Excess	Jitter excess for "(572146000) GLENN HONGKONG", value is 156.1, limit is 104, Sync State - UTC Direct
04.02.2010 21:26:04	(376054000) SEABULK PLOVER	Jitter Excess	Jitter excess for "(376054000) SEABULK PLOVER", value is -117.1, limit is 104, Sync State - UTC Direct
04.02.2010 21:26:04	(376054000) SEABULK PLOVER	Slot Collision	Slot Collision for slot 431 channel B, used by (376054000) SEABULK PLOVER, reserved by (440430000)
04.02.2010 21:26:03	(533234000)	Jitter Excess	Jitter excess for "(533234000)", value is -3595.2, limit is 104, Sync State - UTC Direct
04.02.2010 21:26:03	(525003027) M.V. JAITWANGI PB 400	Jitter Excess	Jitter excess for "(525003027) M.V. JAITWANGI PB 400", value is -118.4, limit is 104, Sync State - UTC Direct
04.02.2010 21:26:02	(563005260) SEDNA	Jitter Excess	Jitter excess for "(563005260) SEDNA", value is -148.8, limit is 104, Sync State - UTC Direct
04.02.2010 21:26:02	(564414000) MT PINK DIAMOND	Jitter Excess	Jitter excess for "(564414000) MT PINK DIAMOND", value is -8666.3, limit is 104, Sync State - UTC Direct
04.02.2010 21:26:02	(564367000) SEA FORTUNE	Jitter Excess	Jitter excess for "(564367000) SEA FORTUNE", value is -113.2, limit is 104, Sync State - UTC Direct
04.02.2010 21:26:02	(564367000) SEA FORTUNE	Slot Collision	Slot Collision for slot 367 channel B, used by (564367000) SEA FORTUNE, reserved by (354534000) ORIENTAL BRIGHT
04.02.2010 21:26:02	(413202000) GUANG XING ZHOU	Jitter Excess	Jitter excess for "(413202000) GUANG XING ZHOU", value is -199.3, limit is 104, Sync State - UTC Direct
04.02.2010 21:26:02	(563921000) PENGUIN 7	Jitter Excess	Jitter excess for "(563921000) PENGUIN 7", value is 119.6, limit is 104, Sync State - UTC Direct
04.02.2010 21:26:01	(563002840) WAVEMASTERS	Slot Collision	Slot Collision for slot 349 channel B, used by (563002840) WAVEMASTERS, reserved by (636013193) CRYSTAL SEAS
04.02.2010 21:26:01	(564811000)	Jitter Excess	Jitter excess for "(564811000)", value is 192.4, limit is 104, Sync State - UTC Direct
04.02.2010 21:26:01	(995630001) OUTER SHOAL	Slot Collision	Slot Collision for slot 325 channel B, used by (995630001) OUTER SHOAL, reserved by (563000970) TEMBUSU
04.02.2010 21:26:01	(563006050)	Slot Collision	Slot Collision for slot 328 channel B, used by (563006050), reserved by (565290000) WAN SERI BENI
04.02.2010 21:26:01	(372296898)	Slot Collision	Slot Collision for slot 325 channel B, used by (372296898), reserved by (018879559)
04.02.2010 21:26:01	(565953000)	Slot Collision	Slot Collision for slot 317 channel B, used by (565953000), reserved by (563012250) GP 2MA, <>

Lista de Alarmas por cada Contacto o para todos los Contactos Simultáneamente

The screenshot displays the Pharos Marine Automatic Power software interface. It features a central map showing AIS contacts with vector lines indicating direction and speed. On the left, a list of contacts is visible, including 'SEABOARD RELIANCE' (MMSI 636013199). The top right contains a 'Message list' and a 'Target list'. The bottom right shows a detailed view of the 'SEABOARD RELIANCE' contact, listing its MMSI, coordinates, heading, speed, and destination (Houston).

Pantalla con detalles Gráficos de Vectores, dirección, velocidad, etc. de cada contacto

(636013199) SEABOARD RELIANCE

- MMSI** -- 636013199
- Latitude** -- 29°44'.920 N
- Longitude** -- 95°06'.582 W
- COG (°)** -- 0.0
- SOG (kn)** -- 0.0
- Heading (°)** -- 239.0
- Rate of Turn (°/min)** -- 0.0
- Nav Status** -- Moored
- Name** -- SEABOARD RELIANCE
- Call Sign** -- A8LI2
- Destination** -- HOUSTON
- IMO Number** -- 8908090
- Ship and Cargo** -- Cargo Ship
- ETA** -- 08:00:00 23.06.2010
- Position Accuracy** -- Low
- RAIM** -- Not In Use
- Repeat Indicator** -- 0
- AIS Class** -- Class A
- Last Updated** -- 07:36:01

Ventana de datos de detalle de la información entregada por cada buque con AIS