



## FA-410 LED LR LONG RANGE LED MARINE LANTERN

The FA-410 LED LR signaling lantern is designed for lighthouse applications where a long range LED lantern is the preferred choice. The light is a unique combination of high intensity and optical efficiency giving the possibility of a nominal range in excess of 20 nautical miles (T=0.74) and 29 nautical miles (T=0.85), depending on color and flashing character.

### Features

- FA-410 LED LR consists of a linear array of very high flux LEDs individually mounted in a parabolic reflector
- The highly efficient reflector uses a state of the art dichroic hybrid spectral coating; groups of reflectors are assembled in stacked arrays and the array system is driven by specially designed electronics
- LED arrays are coupled to a unique patented cooling system which ensures that the LEDs are able to maintain intensity well beyond the life of competing products; temperature of the LEDs is kept below 100°C at maximum power level to assure the long life of 60,000 hours
- The controller provides flash control, current limiting to the LED, photocell input (auto, forced on, forced off), synchronization terminal and AC converter (if required)
- Terminals for UNIFLASH® III wireless synchronization system or hardwired sync circuit (Optional)
- Lanterns can be mounted up to 500 meters away from external electronics (some restrictions apply, consult factory)
- Terminals for UNIFLASH® III wireless synchronization system or hardwired sync circuit or hardwired sync circuit
- 255 + 1 Selectable character Flash Rhythm (one selectable)
- 15+1 selectable power level settings (one selectable)
- External or Internal mount Photocell
- ATONIS ready for AIS Msg 21 and Msg 6 monitoring



## SPECIFICATIONS

**CORPORATE HEADQUARTERS  
& MANUFACTURING  
OPERATIONS**  
Houston, TX  
Phone: +1-713-228-5208  
Fax: +1-713-228-3717  
sales@automaticpower.com

### U.S. LOCATIONS

**PMAPI GULF OF MEXICO**  
Gray, LA  
Rene "Boogie" LeBlanc  
Phone: +1-985-223-8700  
Fax: +1-985-223-8710  
rleblanc@automaticpower.com

**PMAPI WEST COAST**  
Novato, CA  
Pete Dolan  
Phone: +1-415-382-6296  
Fax: +1-415-382-6299  
pdolan@automaticpower.com

### INTERNATIONAL LOCATIONS

**AB PHAROS MARINE PTE LTD**  
Singapore  
Phone: +65-6747-9325  
Fax: +65-6746-0478  
sales@pharos-api.com

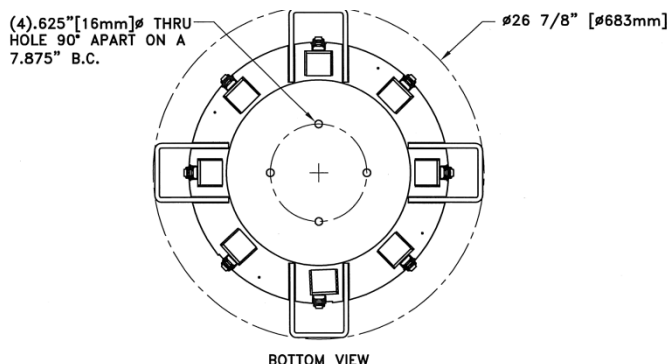
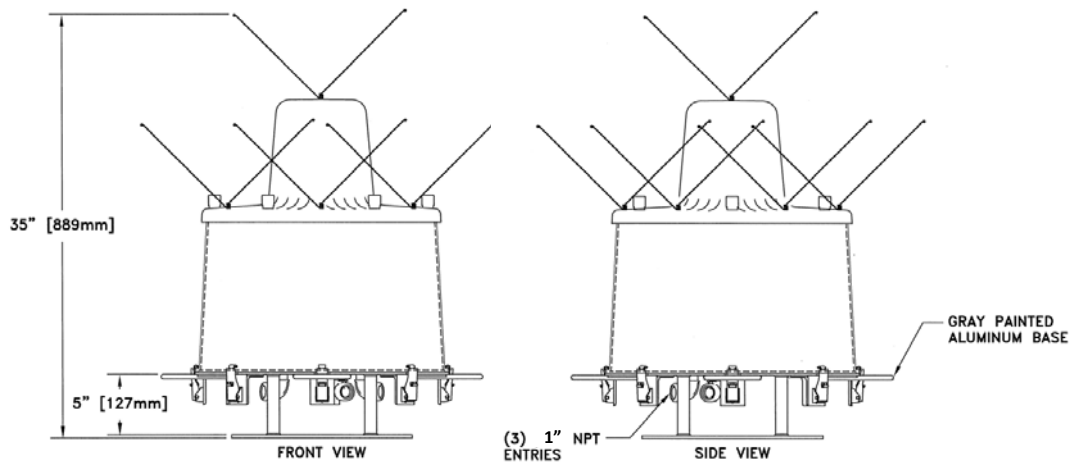
**PHAROS MARINE LTD  
MANUFACTURING OPERATIONS**  
London, UK  
Phone: +44-20-8538 1100  
Fax: +44-20-8577 4170  
sales@pharosmarine.com

**SIMS SYSTEMS LTD  
MANUFACTURING OPERATIONS**  
Great Yarmouth, UK  
Phone: +44-1493 659271  
Fax: +44-1493 601882  
info@sims-systems.com

[www.automaticpower.com](http://www.automaticpower.com)

<b>Height:</b>	889mm (35")
<b>Weight:</b>	41 kg (90 lbs.)
<b>Input Voltage:</b>	120/240 VAC 50-60 Hz or 22-30 Volts DC
<b>Power Consumption:</b>	Maximum 300W Average Per Duty Cycle
<b>Available Colors:</b>	White, Green, Yellow, Blue, Red
<b>Quiescent Current:</b>	3.6 Watts
<b>Lens Type:</b>	410 mm Precision Molded, Acrylic Cover
<b>Lantern Housing:</b>	Aluminum
<b>Visibility:</b>	360° Omnidirectional;
<b>Range:</b>	Up to 20 NM, Depending on Color & Flash Rate
<b>Vertical Divergence:</b>	
<b>White:</b>	5° to 50%; 12° to 10%
<b>All Other Colors:</b>	3° to 50%; 10° to 10%
<b>Monitor and Control:</b>	Optional
<b>Synchronization:</b>	UNIFLASH®III Wireless Synchronization System or Hardwired Sync Circuit (Optional)
<b>Mounting:</b>	(4) 16mm (.625") Thru Hole 90° Apart
<b>Operating Temperature:</b>	-20°C to +40°C

\*Specifications subject to change without notice.



## LED PHOTOMETRIC DATA (CANDELA)

Photometric Data Conforms to IALA Chromaticity and 90th Percentile Intensity Standards

SYSTEM POWER, W	GREEN	YELLOW	BLUE	RED
1 040	60 000	36 000	26 250	24 600
625	36 150	21 690	15 800	21 900
375	21 680	13 010	9 500	14 900
250	14 450	8 640	6 300	9 940

SYSTEM POWER, W	WHITE-C	MAXIMUM DUTY CYCLE
1 524	172 608	20%
1 137	127 896	26%
849	98 585	35%
462	58 851	65%

\*Consult factory for full intensity table.