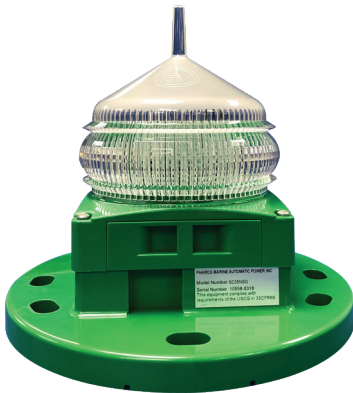




*Class A, B and C compliant in accordance with USCG 8th District 33 CFR Part 67 for artificial island and structures, and 33 CFR Part 66 for 3 and 6.3 NM private navigation aids.*



### OVERVIEW

The PMAPI-NS35 is a 3 - 6.3NM weather-protected marine lantern with a high intensity LED light source that can be combined with optional GPS synchronization and External IO port.

- LEDs on a protected metal core PCB for maximum useful life
- Flexible electronic configurations
- Use on offshore platforms, port and harbor, aquaculture, fixed or floating structures

### KEY FEATURES

- **Rugged, weather-resistant construction materials:** High impact resistant polycarbonate for ice, ultraviolet exposure, salt air and seawater spray at a wide range of ambient temperatures
- **High intensity, energy efficient fan beam LED array:** Maximum visible range up to 7.8NM at 0.85T pending flash character in optimal conditions
- **IR Remote:** Powering on & off, set / retrieve configuration parameters such as flash pattern, effective intensity, day/night control, etc.
- **IALA approved colors:** Single color LED engine - white, yellow, red or green
- **Integrated bird deterrent:** No additional accessories required
- **Longevity** - Estimated average service life of 10 years

### PERFORMANCE FEATURES

- **Intensity control:** Effective lantern intensity set on Schmidt-Clausen method
- **Flash character control:** 256 programmable flash characters and 2 custom flash characters
- **Day/Night transition level settings:** Programmable for active at all times or only after sunset. Day / Night level settings (sunset / sunrise transition) can be field programmed
- **Calendar control** - Programmable season on/off date
- **Input protection** - Lantern power input is reversed polarity protected for field repair
- **Ripple delay** - 0.05 to 12.7 seconds & master/slave sync options
- **Storage mode** - Automatic storage mode with adjustable automatic wake up
- **Programmable sleep and test modes**
- **Dynamic compensation circuitry for the candela low output, based on internal temperature, LED flash duration and LED color, to always keep the same programmed output intensity**

### OPTIONAL FEATURES

- **GPS Synchronisation:** Optional internally mounted hardware will allow the lantern to flash in-sync with other PMAPI and third party lanterns that are GPS synced
- **External I/O port:** Allows connection to an external monitoring device or for hardwired synchronisation to other lanterns

## OPTICAL CHARACTERISTICS

LED Color	WHITE	YELLOW	RED	GREEN
Light source	12 White LEDs	12 Yellow LEDs	12 Red LEDs	12 Green LEDs
Visible range (NM) <sup>1</sup>	3 - 6.3	3 - 6.3	3 - 6.3	3 - 6.3
Effective intensity range (cd) <sup>2</sup>	10 - 180 <sup>3</sup>	10 - 180 <sup>3</sup>	10 - 180 <sup>3</sup>	10 - 180 <sup>3</sup>
Horizontal divergence	360°	360°	360°	360°
Vertical divergence at 50% intensity	7°	7°	7°	7°
Peak intensity (cd)	325	325	325	325

Notes:

<sup>1</sup> Visible range based on IALA standards at atmospheric transmissivity of 0.74

<sup>2</sup> Effective intensity computed from Blondel Rey method

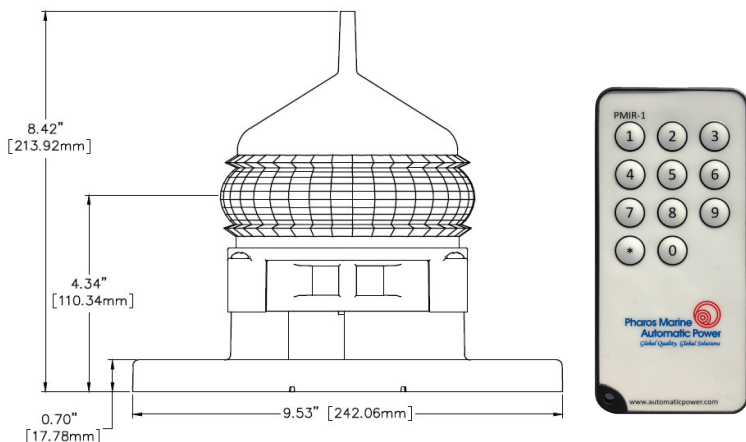
<sup>3</sup> Maximum Effective Intensity limited by ambient temperature and flash length.

### PHYSICAL SPECIFICATIONS

Operating temperature range (°C)	-30°C to +50°C
Operation humidity (%)	100
IP Rating	IP68*
Body material	UV stabilized polycarbonate
Lens material	Acrylic
Mounting	3 - 4 hole, Ø 200mm

### DIMENSIONS

Width (mm / in)	242mm / 9.53"		
Depth (mm / in)	242mm / 9.53"		
Height (mm/in)	<b>NS35</b> 214 mm / 8.42 in		
Weight (kg/lb)	1.18 kg / 2.6 lb		



### STANDARDS

EMI/EMC	EN55015:2013 radiated and conducted emissions* EN61547:2009 Immunity FCC 47 CFR Section 15 Class A*
Optical Test	IALA Recommendation E-122 (2001) and E-200-3 Part 3 (2008)
Colour	IALA Recommendation E-200-1 Part 1
Daylight	IALA Recommendation 1038
Power Supply	IEC60945 Section 7 normal and peak voltage, and reverse polarity protection
Ingress	IP68 to IEC60529
Shock	MIL-STD-202G Method 213B Cond H*
Vibration	MIL-STD-202G Method 204D Cond B*
Immersion	MIL-STD-202G Method 104A Cond B withstands immersion to 1m depth*

### ORDERING

Catalog number scheme: PMAPI-NS35-XX-C-ZZ

XX = Input Power

AC = 120 - 240 VAC

DC - 12 - 24 VDC

C = Colour (G = Green, R = Red, W = White, Y = Yellow)

ZZ = Options:

00 = No Options

01 = GPS

02 = GPS and External IO

03 = External IO

Example: PMAPI-NS35-DC-G-02 = 12VDC External Power, Green with GPS and External IO

PMIR-1 = IR Remote

*\*All values are subject to change without notice.*