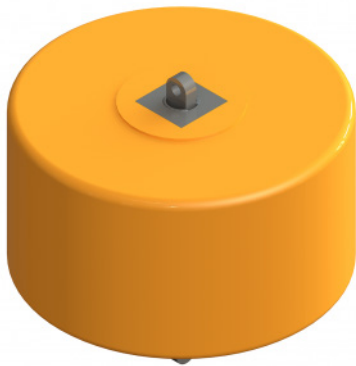


BROCHURE



Chain Through



Pad Eye

## OVERVIEW

PMAPI's cylindrical, barrel and modular mooring buoys are available as standard for large vessel applications. PMAPI have supplied mooring buoys to organisations such as the RNLI and The Ministry of Defence. A range of custom steelwork fittings can be provided. Applications for commercial mooring buoys are offshore and remote mooring, temporary mooring of vessels in a port, dock or harbour, additional mooring for large vessels on berthing/mooring dolphins and longer term mooring for infrequently used vessels.

## KEY FEATURES

- Manufactured from durable and long lasting materials
- Virtually non-marking skin
- Wear and abrasion resistant outer skin prolongs the service life of the buoy
- Virtually unsinkable, therefore maximising service reliability
- High impact absorption limits damage to buoy or the moored vessel
- Low maintenance
- Optional LED lanterns and internal radar reflectors enhance visibility of buoy to nearby vessels therefore increasing vessel safety

## CONSTRUCTION

- Closed cell polyethylene foam core in a range of densities
- Reinforced high performance polyurethane elastomer skin
- Mooring buoys available with chain through, pad eye or handling crucifix configuration, non-slip decks, self-contained LED lanterns & internal radar reflectors

# Chain Through

## Mooring Buoy Chain Through - PERFORMANCE DATA AND SPECIFICATIONS

NOMINAL LENGTH (mm)	NOMINAL DIAMETER (mm)	BUOYANCY (kg)	COLOUR	SKIN THICKNESS
350	1016	200	Orange	8
350	1016	200	Yellow	8
525	1213	500	Orange	8
525	1213	500	Yellow	8
525	1336	600	Orange	8
525	1336	600	Yellow	8
700	1496	1000	Orange	8
700	1496	1000	Yellow	8

# Pad Eye

## Mooring Buoy Pad Eye - PERFORMANCE DATA AND SPECIFICATIONS

PRODUCT REFERENCE	DIAMETER	BUOYANCY UNIT HEIGHT (mm)	TOTAL WEIGHT (kg)	NETT BUOYANCY (kg)	CHAIN CAPACITY (kg)	SAFE WORKING LOAD (t)
PMAP-PAD-00260	1000	460	90	260	130	5
PMAP-PAD-00500	1260	500	105	500	250	5
PMAP-PAD-00600	1300	570	155	600	300	5
PMAP-PAD-00800	1350	700	180	800	400	5
PMAP-PAD-01000	1360	900	210	1000	500	5
PMAP-PAD-01500	1500	1000	250	1500	750	5
PMAP-PAD-02000	1750	1000	310	2000	1000	5
PMAP-PAD-02000-30T	1900	1025	525	2000	1000	30
PMAP-PAD-02500	2150	1025	715	2500	1250	50
PMAP-PAD-03000	2300	1025	770	3000	1500	50
PMAP-PAD-04000	2150	1525	900	4000	2000	100
PMAP-PAD-05000	2330	1525	1000	5000	2500	100
PMAP-PAD-06000	2550	1525	1100	6000	3000	100
PMAP-PAD-08000	2700	1900	1900	8000	4000	150
PMAP-PAD-10000	2900	2050	1800	10000	5000	100
PMAP-PAD-12000	3100	2050	2000	12000	6000	100
PMAP-PAD-15000	3500	2050	3050	15000	7500	150
PMAP-PAD-18000	3550	2400	3540	18000	9000	175
PMAP-PAD-20000	3600	2600	3650	20000	10000	150
PMAP-PAD-25000	4000	2600	5200	25000	12500	250

\*All values are subject to change without notice.



**Pharos Marine Automatic Power, Inc.**  
Houston, TX - USA  
sales@automaticpower.com  
Phone: +1-713-228-5208

**Pharos Marine Automatic Power**  
Gray, LA - USA  
rleblanc@automaticpower.com  
Phone: +1-985-223-8700

**Pharos Marine Automatic Power, Ltd.**  
London, UK  
sales@pharosmarine.com  
Phone: +44-20-8538-

**AB Pharos Marine Pte.**  
Singapore  
sales@pharos-api.com  
Phone: +65-6747-9325