



## OVERVIEW

The **LIEX-710/23** is a compact, lightweight, and reliable sound emitter designed for use in marine applications. Proven in over 40 years of service in the marine environment, the LIEX-710 horn's rugged construction and water proof design make it ideal for mounting on offshore oil platforms and drilling rigs, offshore wind farms, calm buoys and floating production systems (FPSOs).



A 3 LIEX-710 emitter system is designated as the LIEX-710/23. It is U. S. Coast Guard approved for 2 mile range with 110.3 watt input to the emitter. LIEX-710/23 FM APPROVED 2-MILE FOG SIGNAL

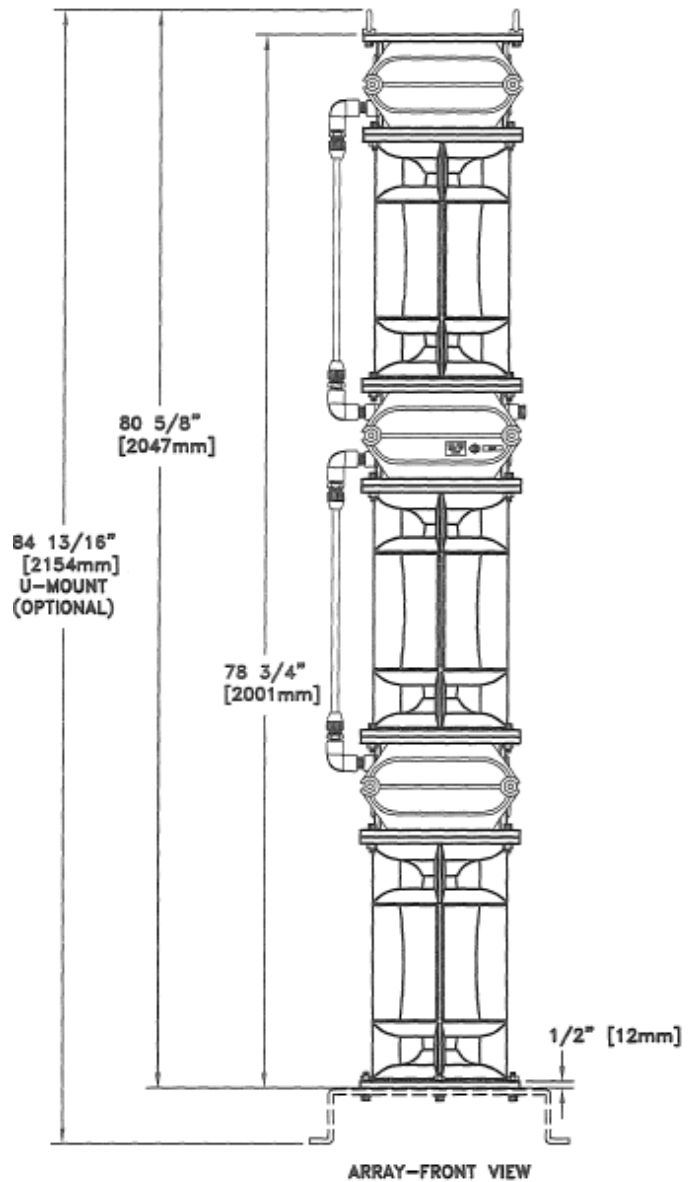
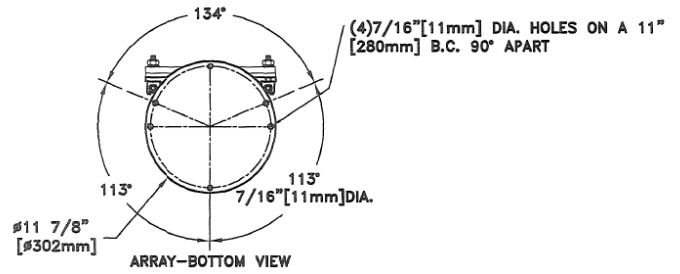
## KEY FEATURES

- Resonates at approximately 670 Hz
- Designed at an optimum frequency to maximize range rating for both U. S. Coast Guard and IALA criteria
- Omnidirectional audio output
- Microprocessor-based control electronics
- Remote control terminals for a fog detector, a remote coder or an "at will" switch - a fog detector is useful on manned platforms where running the foghorn continuously is a noise irritant; working without human intervention, the foghorn/fog detector automatically activates the foghorn in low visibility when it is required by regulations and prevents it from sounding under all other conditions
- Power supply includes remote code selector terminals for changing the sounding rhythm and terminals for synchronizing the horn with other horns or lights
- Synchronizing may also be accomplished by a centralized master coder
- Terminals are also provided for a 2-hour temporary silence control - this switch allows a technician to temporarily disable the irritating noise from foghorn; after the time out period, foghorn returns to sounding its designated code without the technician having to remember to manually switch the foghorn back on

## PHYSICAL SPECIFICATIONS

Nominal Range	2 Mile
Frequency	670 Hz / 660 Hz
Height	2000 mm (78 ¾")
Diameter	302 mm (11 7/8")
Weight	95 kg (209 lbs.)
Shipping Weight	135 kg (297 lbs.)
Mounting	(4) 11 mm (7/16") Holes on a 280 mm (11") B.C.
Housing	Marine Grade Cast Aluminum
Input Voltage	10.5-30 VDC, 120 or 230 VAC (Optional Supply Voltages Available Upon Request)
Input Power to Horn	100 Watts
Output Power to Drivers	56 Watts
Operating Temperature	-25°C to 55°C
Corrosion Protection	NEMA-4X
Ingress Rating	IP-66

Certificates  
 FM APPROVED  
 NI/I/2/BCD/T4; -25 °C ≤Ta ≤+55 °C  
 NI/I/2/IIB+H2/T4; -25 °C ≤Ta ≤+55 °C  
 ATEX or IECEx Zone 1 & 2 Versions Also Available



\*All values are subject to change without notice.

Pharos Marine Automatic Power, Inc.  
 Houston, TX - USA  
 sales@automaticpower.com  
 Phone: +1-713-228-5208

Pharos Marine Automatic Power  
 Gray, LA - USA  
 rieblanc@automaticpower.com  
 Phone: +1-985-223-8700

Pharos Marine Automatic Power, Ltd.  
 London, UK  
 sales@pharosmarine.com  
 Phone: +44-20-8538

AB Pharos Marine Pte.  
 Singapore  
 sales@pharos-api.com  
 Phone: +65-6747-9325