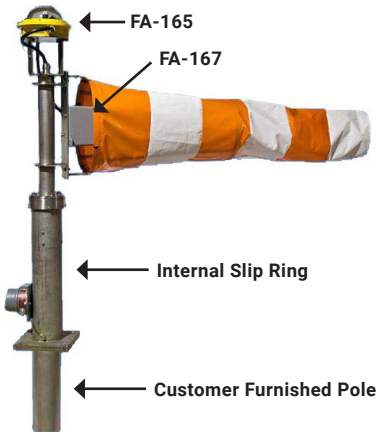




# WS-HAZARDOUS AREA

LED Lighted Windsock



## OVERVIEW

The WS-Hazardous Area LED Lighted Windsock is an LED based lighted Windsock for offshore helidecks on platforms, drilling rigs and floating production systems (FPSOs).

## KEY FEATURES

- Windsock is internally illuminated
- Utilizes advanced LED lighting technology coupled with certified components, lighting fixtures and slip rings to give exceptional service life with very low maintenance
- Stainless steel stanchion and cast marine grade aluminum lighting fixtures with toughened glass globe provide superior performance to plastic products in high temperature, high UV and chemically contaminated marine environments
- Windsock does not interfere with a pilot's night vision
- Provides reliable wind direction and wind speed indications
- Lighting complies with CAP 437 guidelines and ICAO Annex 14
- Suitable for installation in either NEC 500/505 Class 1 Div. 2, Zone 2, or ATEX/IECEX Zone 1, depending on configuration
- FA-165 SERIES: 3 watt Red LED Array aviation obstruction light conforming to 10 candela ICAO standard or a 20 watt 50 to 200 candela to CAP 168 Group B
- FA-167: 15 Watt Array of individual White LEDs specifically designed to provide superior internal illumination for windsocks

## PHYSICAL SPECIFICATIONS

Mechanical Dimensions	1530 mm x 1560 mm (60 1/4" x 61 7/16")
Input Voltage	24 VDC or 120/220/240 AC Input
Power Consumption	35 Watts Total
Monitor and Control	External Monitoring & Control on Request
Operating Temperature	-20°C to +40°C

### CERTIFICATES

#### Slip Ring:

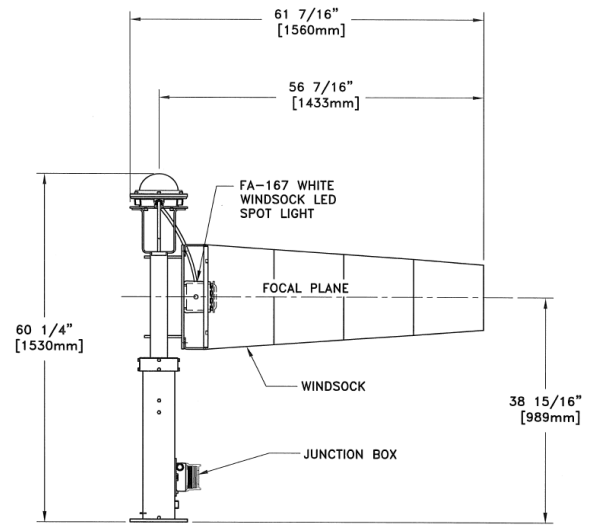
ETL: Class 1, Division 1, Group C & D, T5  
 Class 1, Zone 1, AEx d IIB, T5  
 CSA: Class 1, Division 1, Group C & D, T5  
 Class 1, Zone 1, Ex d IIB T5  
 IECEX: Ex d IIB T5 Gb  
 ATEX: Ⓐ 0334 II 2 G Ex d IIB T5 Gb

#### FA-167EX:

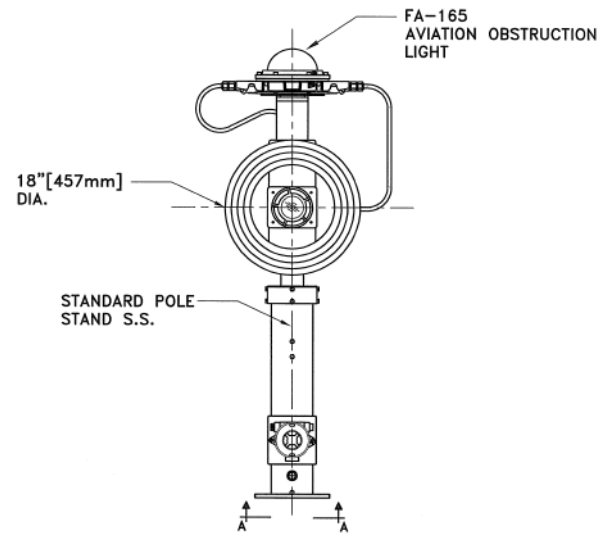
Class 1, Div. 1, Groups B, C, D  
 Class 1, Zone 1, Groups IIB+H2, IIA  
 NEMA 4X, 7(B,C,D)  
 Ta -20°C to +40°C  
 CENELEC/ATEX/IEC Ex  
 EExd IIC T6 or T5  
 IP66 T80°C or T90°C  
 Ex d IIC T6 or T5  
 Ex tD A21 IP66 T80°C or T90°C  
 Ta -20°C to +40°C

#### FA-165 SERIES:

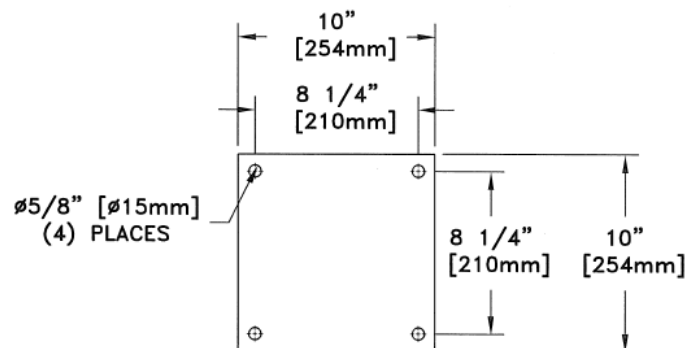
Class 1, Div. 2, Groups B, C, D  
 Ta 54°C T5  
 EC-TYPE EXAMINATION CERTIFICATE  
 Certificate Number: ITS10ATEX17055X  
 Coding: II 2 G Ex d IIB T5 Ta -20°C to +55°C Gb  
 Certificate No.: IECEX ITS 10.0041X  
 Coding: Ex d IIB T5 Tamb -40°C/-20°C to +55°C  
 Gb (Dependent on model)



SIDE VIEW



FRONT VIEW



VIEW A-A  
MOUNTING DETAIL



\*All values are subject to change without notice.

Pharos Marine Automatic Power, Inc.  
 Houston, TX - USA  
 sales@automaticpower.com  
 Phone: +1-713-228-5208

Pharos Marine Automatic Power  
 Gray, LA - USA  
 rleblanc@automaticpower.com  
 Phone: +1-985-223-8700

Pharos Marine Automatic Power, Ltd.  
 London, UK  
 sales@pharosmarine.com  
 Phone: +44-20-8538-

AB Pharos Marine Pte.  
 Singapore  
 sales@pharos-api.com  
 Phone: +65-6747-9325